

# X-10 CROSSwire™

## Components

PART NO./INFO:

PART NO./INFO:



**Part no. 3016**  
 Module 10 cm  
 Weight: 0,220 kg  
 Material: Composite, alu. & steel



**Part no. 3026**  
 Module 110 cm  
 Weight: 0,920 kg  
 Material: Composite, alu. & steel



**Part no. 3017**  
 Module 20 cm  
 Weight: 0,290 kg  
 Material: Composite, alu. & steel



**Part no. 3027**  
 Module 120 cm  
 Weight: 0,990 kg  
 Material: Composite, alu. & steel



**Part no. 3018**  
 Module 30 cm  
 Weight: 0,360 kg  
 Material: Composite, alu. & steel



**Part no. 3062**  
 Module 130 cm  
 Weight: 1,060 kg  
 Material: Composite, alu. & steel



**Part no. 3019**  
 Module 40 cm  
 Weight: 0,430 kg  
 Material: Composite, alu. & steel



**Part no. 3072**  
 Module 140 cm  
 Weight: 1,130 kg  
 Material: Composite, alu. & steel



**Part no. 3020**  
 Module 50 cm  
 Weight: 0,500 kg  
 Material: Composite, alu. & steel



**Part no. 3028**  
 Module 150 cm  
 Weight: 1,200 kg  
 Material: Composite, alu. & steel



**Part no. 3021**  
 Module 60 cm  
 Weight: 0,570 kg  
 Material: Composite, alu. & steel



**Part no. 3059**  
 Module 160 cm  
 Weight: 1,270 kg  
 Material: Composite, alu. & steel



**Part no. 3022**  
 Module 70 cm  
 Weight: 0,640 kg  
 Material: Composite, alu. & steel



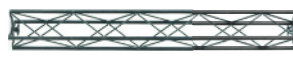
**Part no. 3076**  
 Module 170 cm  
 Weight: 1,340 kg  
 Material: Composite, alu. & steel



**Part no. 3023**  
 Module 80 cm  
 Weight: 0,710 kg  
 Material: Composite, alu. & steel



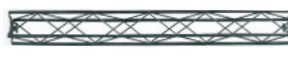
**Part no. 3029**  
 Module 180 cm  
 Weight: 1,410 kg  
 Material: Composite, alu. & steel



**Part no. 3024**  
 Module 90 cm  
 Weight: 0,780 kg  
 Material: Composite, alu. & steel



**Part no. 3073**  
 Module 190 cm  
 Weight: 1,480 kg  
 Material: Composite, alu. & steel



**Part no. 3025**  
 Module 100 cm  
 Weight: 0,850 kg  
 Material: Composite, alu. & steel



**Part no. 3030**  
 Module 200 cm  
 Weight: 1,550 kg  
 Material: Composite, alu. & steel

## PART NO./INFO:



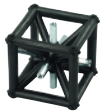
**Part no. 3077**  
Curve Module, 40 cm, Radius 70 cm  
Weight: 0,430 kg  
Material: Composite, alu. & steel  
Full circle = 12 pcs.



**Part no. 3075**  
Curve Module, 60 cm, Radius 70 cm  
Weight: 0,570 kg  
Material: Composite, alu. & steel  
Full circle = 8 pcs.



**Part no. 3094**  
Curve Module, 60 cm, Radius 140 cm  
Weight: 0,600 kg  
Material: Composite, alu. & steel  
Full circle = 16 pcs.



**Part no. 3032**  
Cube  
Weight: 0,390 kg  
Material: Composite & steel



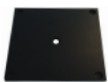
**Part no. 3031**  
Connector  
Weight: 0,030 kg  
Material: Composite & steel



**Part no. 3068**  
Connector 45 deg  
Weight: 0,100 kg  
Material: Composite & steel



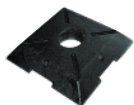
**Part no. 3069**  
Hinge 30-230 deg  
Weight: 0,100 kg  
Material: Composite & steel



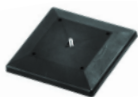
**Part no. 3056**  
Foot 12 x 12 cm  
Weight: 0,140 kg  
Material: PEHD



**Part no. 3057**  
Foot 30 x 30 cm  
Weight: 0,850 kg  
Material: PEHD



**Part no. 3064**  
Foot 40 x 40 cm  
Weight: 8,000 kg  
Material: Metal reinforced PEHD



**Part no. 3066**  
Foot 16 x 16 cm  
Weight: 0,160 kg  
Material: Composite



**Part no. 3067**  
Foot 16 x 60 cm  
Weight: 0,500 kg  
Material: Composite



**Part no. 3071**  
Foot 16 x 38 cm  
Weight: 0,350 kg  
Material: Composite



**Part no. 3036**  
L-table 30 x 30 cm  
Weight: 1,030 kg  
Material: PEHD & steel

## PART NO./INFO:



**Part no. 3083**  
Shelf 20 x 60 cm  
Weight: 0,700 kg  
Material: Alu.



**Part no. 3084**  
Shelf 20 x 80 cm  
Weight: 0,900 kg  
Material: Alu.



**Part no. 3085**  
Shelf 20 x 100 cm  
Weight: 1,100 kg  
Material: Alu.



**Part no. 3086**  
Shelf 20 x 120 cm  
Weight: 1,300 kg  
Material: Alu.



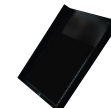
**Part no. 3107**  
Book shelf 30 x 120 cm  
Weight: 2,000 kg  
Material: Alu.



**Part no. 3087**  
Table top, 40 x 120 cm  
Weight: 2,400 kg  
Material: Alu.



**Part no. 3095**  
iPad holder  
Weight: 0,200 kg  
Material: Alu.



**Part no. 3090**  
Brochure holder - A4  
Weight: 0,450 kg  
Material: Alu.



**Part no. 3108**  
Brochure holder - A5  
Weight: 0,350 kg  
Material: Alu.



**Part no. 3109**  
Brochure holder - M65  
Weight: 0,250 kg  
Material: Alu.



**Part no. 3106**  
Lamp, LED - 25W  
Weight: 0,660 kg  
Material: Various



**Part no. 3055**  
Lamp bracket  
Weight: 0,020 kg  
Material: POM



**Part no. 3041**  
Clip, top - 2 version, for alu list  
Weight: 0,005 kg  
Material: POM



**Part no. 3042**  
Clip, bottom - 2 version, for alu list  
Weight: 0,005 kg  
Material: POM & elastic

PART NO./INFO:



Part no. 3082  
Clip, full face  
Weight: 0,010 kg  
Material: P OM



Part no. 3088  
Clip with spring  
Weight: 0,010 kg  
Material: POM & steel



Part no. 3045  
Alu. list - per m.  
Weight: 0,110 kg - per m.  
Material: Alu.



Part no. 3080  
LCD bracket, set of 2 pcs.  
Weight: 1,133 kg  
Material: Steel



Part no. 3096  
LCD Center Bracket  
Weight: 1,5 kg  
Material: Steel



Part no. 3054  
Clip on bracket  
Weight: 0,020 kg  
Material: POM



x 1 pcs.

Part no. 3110  
Clip for eyelets X-10  
Weight: 0,005 kg  
Material: POM & Elastic



x 100 pcs.

Part no. 3111  
Clip for eyelets X-10\_100 pack  
Weight: 0,500 kg  
Material: POM & Elastic

PART NO./INFO:



Part no. 3104  
Slat Bracket 120 cm  
Weight: 1,600 kg  
Material: Alu.



Part no. 3099  
Wall Mount  
Weight: 0,1 kg  
Material: Alu. & PA6



Part no. 3098  
Panel bracket  
Weight: 0,020 kg  
Material: P OM



Part no. 3070  
Screw - M6 - with O-ring  
Weight: 0,010 kg  
Material: PA6



Part no. 3091  
Transport trolley, 32 x 32 x 122 cm  
9 pcs. - 120 cm  
Material: T extile



Part no. 3092  
Transport trolley, 42 x 42 x 122 cm  
16 pcs. - 120 cm  
Material: T extile



Part no. 3093  
Transport trolley, 42 x 42 x 152 cm  
16 pcs. - 150 cm  
Material: T extile



Part no. 3100  
Waterfall Bracket  
Weight: 0,8 kg  
Material: Steel